



# The Trivista Series

Triple Wide Modular Homes

Front View





**CTF-404 "The Goldstream"**  
40'6" x 40'/35'6"/46' - 1,890 Sq. Ft.

*Artist Renderings  
Optional Deluxe Exterior Shown  
Some features shown may be optional*

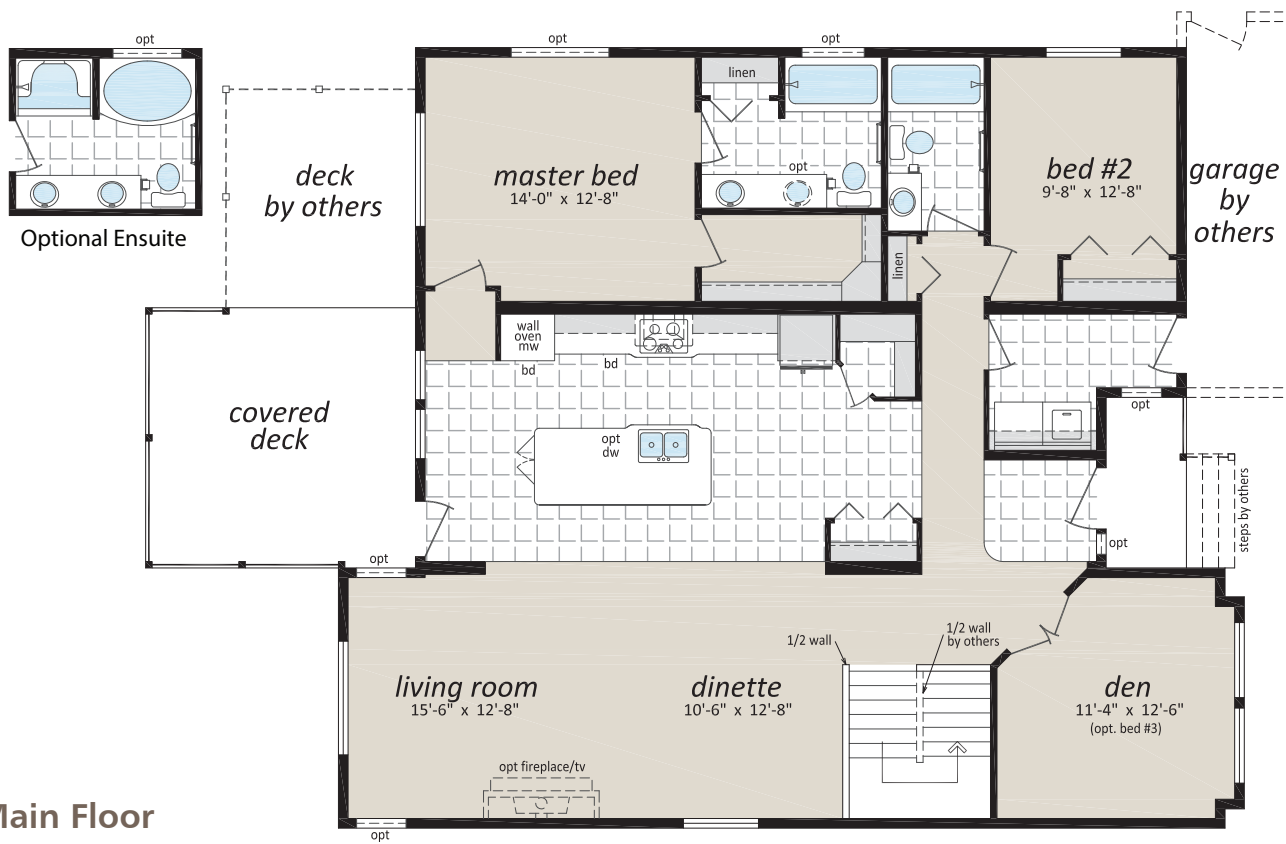
Rear View



[www.srikelowna.ca](http://www.srikelowna.ca)

Follow us:  





### CTF-404 "The Goldstream"

40'6" x 40'/35'6"/46' - 1,890 Sq. Ft.

#### Proposed Basement Layout - By Others

Proposed Basement Rental Suite (By Others)

